



Care & Independence

Bathing Model:.....

Serial Number:

User Name:

*The bathing model and serial number
are located on the label on the frame.*

THIS USER GUIDE IS APPLICABLE
FOR THE FOLLOWING
BATHING PRODUCTS ONLY:

SWS: Rise & Fall Wall Mounted Shower
& Changing Stretcher

Please ensure that both the
product and any associated
accessories have been
adjusted by a competent
person prior to its initial use.

Care & Independence Ltd is a UK manufacturer registered with MHRA as a Class 1 Medical Device Manufacturer and this is a Class 1 medical device as defined in the Medical Device Regulation 2017/745.

Our devices are designed and manufactured to meet or exceed BS EN 10535:2021 for the transfer of disabled persons and are designed and manufactured by Care & Independence, a certified ISO9001:2015 organisation.

Declaration

Care & Independence Ltd, declares under its sole responsibility that the aforementioned products to which this declaration relates, and which bear the CE marking, are in conformity with the applicable requirements of EU regulation 2017/745 as transposed in the laws of the Member States.

Intended Purpose

The device is intended for use by a care giver as a mobility aid for less-abled persons when assisted-bathing needs are required.

ISSUE DATE: 15/03/24
VERSION: UG/BR-SWS-EN04
STATUS: APPROVED
AUTHORISED BY: Technical Director

.....
J. ASH



Advena Ltd, Tower Business Centre, 2nd Flr.,
Tower Street, Swatar, BKR 4013 Malta



improving lives

1. GENERAL



WARRANTY:

The BATHING RANGE products covered in this User Guide have been awarded a TWO YEAR WARRANTY. Any manufacturing defect will be rectified free of charge. Product damage through wear and tear, neglect or accidental damage is not covered by the warranty.

2. BATHING PRODUCT SAFETY



2.1 GENERAL:

2.1.1. Only competent persons should ever use bathing equipment.

2.1.2 A risk assessment **must** be completed before using the product.

2.1.3 It is essential that the equipment is fit for purpose; the correct size and type of product for an individual is essential to ensure the safety and comfort of the user.

2.1.4 Product care and inspection instructions should be followed at all times.

2.1.5. **No bathing equipment must ever be used for more than its rated load** (see label).

2.1.6 We advise that vulnerable users are not left unattended when using this equipment.

2.1.6 **If there is any doubt about equipment safety, remove the equipment from use until checked and authorised for use by a competent person.**

2.1.7 For all associated bathing accessories supplied with this product, please ensure these items have been adjusted accordingly by a competent and trained person authorised to do so. Failure to do so may minimise support, comfort and could result in injury. please refer to the specific user guide instructions. If you require further information please contact Care & Independence.

2.2 EQUIPMENT INSPECTION:

Care & Independence recommend pre-use equipment checks by a competent person to ensure the equipment is free from defects.

2.3 EQUIPMENT SERVICING:

An annual servicing of the equipment is recommended.

3. DAMAGED OR FAULTY PRODUCT



Care & Independence have a strict *Returns & Repair Procedure* to ensure the safety of all involved.

Please **do not** send products back without completing the Return/Repair form.

4. PRODUCT CARE



4.1 GENERAL CARE:

Discolouration to some materials or fading labels may occur as a result of use over time.

NOTE: It is recommended that the product label remain legible throughout the product's working lifetime but is not currently a statutory requirement.



4.2 CLEANING THE EQUIPMENT:

- After use, the product should be cleaned with particular attention being paid to the equipment bed base area.
- It is recommended to use clean warm water followed by an anti-bacterial solution. In the event of a soiled product, a non-abrasive cleaner is recommended in place of the warm water.
- **Do not use bleach or agents containing bleach.**
- Towel dry after use. Any materials should be disposable and dealt with in an environmentally-friendly manner.
- Keep moving parts free from limescale, soap, hairs and fibres.



4.3 DECONTAMINATION:

To avoid cross-contamination in an institutional setting, a three-tiered cleaning approach is recommended: warm, non-abrasive cleaner and anti-bacterial solution.

Please be aware of any infection control policies that may in force locally or appropriate to multi-user scenarios.



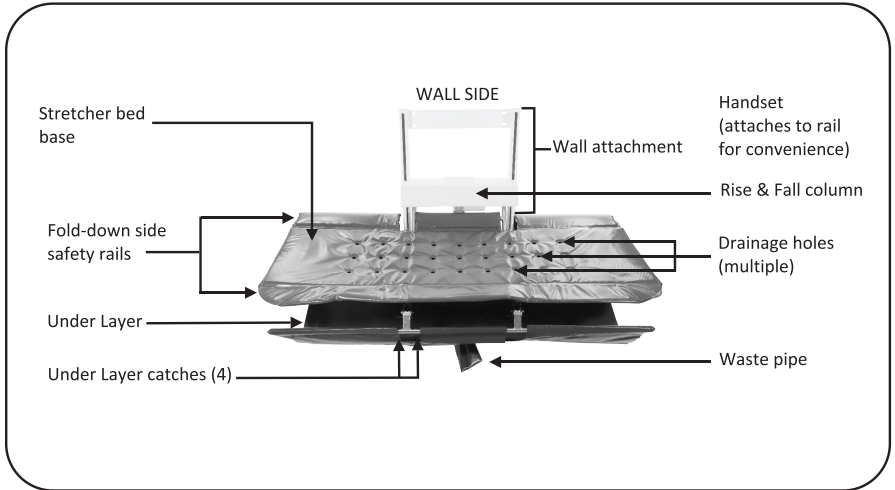
FURTHER INFORMATION:

Available to download from our website

- Returns & Repair Procedure

5. GETTING TO KNOW YOUR PRODUCT

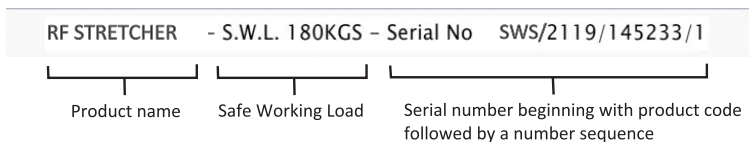
5.1 THE RISE & FALL SHOWER & CHANGING STRETCHER



5.2 PRODUCT LABELS EXPLAINED

There is one label associated with each bathing product. It is located on the main frame.

Example label:



6. INSTALLATION INSTRUCTIONS

REQUIRED: Expansion bolts or chemical fixings, plugs & woodscrews, spirit level, drill, pencil.
**Before installing, ensure chosen wall is strong enough to withstand the load of the stretcher.
No fixings are supplied. Ensure fixings are appropriate to wall construction. Fixings must remain secure for the lifetime of the product.**

6.1 ELECTRICAL SUPPLY

ELECTRICS MUST BE INSTALLED BY A QUALIFIED ELECTRICIAN

- i. Please supply a fused switch spur if rated in a wet area.

This will be used to feed a transformer, which is in a waterproof plastic box approx. 200mm x 150mm x 100mm, which will fix to the wall at about 1200 mm above floor level immediately to the left or the right as appropriate of the stretcher.

- ii. The cable from the fused switch spur to transformer box requires surface mounted in trunking.

6.2 FIXING

6.2.1. CLEAR WALL SPACE REQUIREMENTS:

SWS180: 1800mm - SWS160: 1600mm - SW140: 1400mm.

All spaces measured left to right.

6.2.2. WALL REQUIREMENTS

- Wall needs to be of solid construction and free of surface mounted pipes, etc.
- The device rests on the floor and fixes to the wall with up to 8 fixings. Fixings can be either expansion bolts or chemical fixings.

NOTE: Where the wall is not strong enough but the floor is solid, use Floor Mounting Frame (code SWS 100) which transmits the load to the floor.

6.2.3. FITTING THE STRETCHER TO THE WALL

- i. Offer up the mechanism to the wall and mark positions of holes.
 - You must use 4 fixings (min. 10mm) through the upper wall-plate, and at least two through the lower wall plate. The vertical component of the weight of the unit and patient is taken by the floor.
- ii. Remove mechanism, drill holes and re-fit.
- iii. Fit transformer box at a height of approx. 1200mm, higher if required, to either side of the mechanism.

NOTE: Remember that the handset connects to this box and, although this has a generous length lead on it, the box must be positioned close enough to the mechanism to allow the handset to be held by the carer when standing at any likely position around the bed.

6.2.4 CONNECTING UP

The ¼ inch jack plug on the lead from the actuator, plugs into the water-protected socket on the side of the grey transformer box.

NOTE: The plug needs to be orientated correctly before it will push fully home:

- i. Look into the hole in the box and determine the position of the lugs which protrude. These must line up with the slots on the plug body. The plug body is a very tight fit into the hole.
- ii. When it is fully home, give it a twist to lock it in place.
- iii. Test the motor (once mains is connected) for operation. If motor does not move then the jack plug is probably not fully located.

6.2.5 ASSEMBLY

The stretcher mounts to the mechanism using the short stainless steel bolts, washers and the nylon bushes. Push these into the large holes in the support arms from the outside towards the centre line.

7. OPERATIONAL INSTRUCTIONS

Before starting, check that the bathing equipment is in safe and clean condition and is the appropriate size and model for the person to be serviced. There are a variety of ways to use and adjust this equipment, so please read carefully.

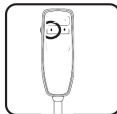
7.1 GENERAL

7.1.1 SAFETY

- i. The Stretcher should be locked in the vertical position when the mechanism is at its lowest position.
- ii. Always ensure side safety rails are in place and secure during use.

7.1.2 TO RELEASE THE STRETCHER FOR USE:

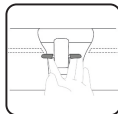
Press the 'Up' button on the control pad for 2-3 inches to release the stretcher bed base.



7.2 USING THE STRETCHER

7.2.1

- i. Lower side safety rails by raising the catches simultaneously.



NOTE: Two-handed operation is a preferred safety function as it prevents accidental dropping of the rails.

- ii. Position user onto the equipment bed base.



- iii. Raise side safety rails, ensuring 'locked' into secure position.



- iv. Press the 'Up' button on the control pad to reach appropriate height for carer.



- v. Position waste pipe over suitable drain or self-draining floor area.



8. ADDITIONAL SUPPORT



- SCAN QR CODE FOR;
- Product information
 - User Guide



Free product training is also offered. Please contact us for further information.



- Expert advice
- Full support



- Faded label replacement
- Equipment repair

Bathing Range USER GUIDE

Care 
Independence

www.careandindependence.com



Care & Independence Ltd,
Unit 3, Telford Business Centre,
Telford Road, Bicester, OX26 4LD

033 012 80808

sales@careandindependence.com

Monday - Friday 08.30 -17.00

*If a third party supplier has provided the product,
you may like to write their contact details here:*



©2024 Care & Independence Ltd All Rights Reserved.
Contents (including images) herewithin are intended as a guide and contents are infallible to error although every care and attention has been taken to ensure that the instructions represented here are honest and true. Care & Independence Ltd reserve the right to alter, modify, add or delete any of the contents and is under no obligation to notify the user of the amendments except where harm or safety issues could occur as a result. All data is correct at time of publication.