



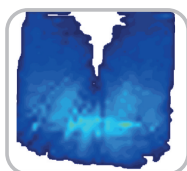
GLOVE™ IN-CHAIR DIVIDED LEG (GIDL) PART OF THE IN-CHAIR DIVIDED LEG SLING FAMILY

Great for users who need to remain seated for longer periods.

Independent pressure map testing provides powerful evidence illustrating the benefits of the GIDL sling.

FEATURES & BENEFITS

- High air-permeability helps reduce sweating and associated risks
- Unique split-leg design without aperture for maximum user comfort
- Full body support
- Strap pockets to eliminate snagging risk



Pressure mapping evidence available



GIDL



GIDL

IN-CHAIR

SLING SHAPE	In-Chair
PRIMARY USE	
TRANSFER	
SIZE	
SWL (KG)	2-9:
ATTACHMENT TYPE	Extensor strap
CLIP OPTION	✓
MODESTY COVER	Loop
PICK UP	Outside leg
POSITIONING AID	✗
HEAD SUPPORT	✓
APERTURE	✗
AMPUTEE	✓
MATERIALS	Soft-knit Polyester
PADDING	Head support
STANDARD COLOUR	
ACCESSORIES	✓
CUSTOMISABLE	✓
WARRANTY	Lifetime
COMPATIBILITY	Majority of hoists
OTHER INFO	Strap pockets



**Call 033 012 80808
to book a free assessment**